



Florida Department of
TRANSPORTATION

Thank you for joining us!

**The Virtual Public Meeting
will begin at 4:30 p.m.**

**St. Lucie West Boulevard Widening Project
in the City of Port St. Lucie,
St. Lucie County**

FPID 435337-1-52-01



Florida Department of
TRANSPORTATION

St. Lucie West Boulevard Widening Project in the City of Port St. Lucie, St. Lucie County

FPID 435337-1-52-01

**Virtual Public Meeting (VPM)
Wednesday, Jan. 19, 2022**

Agenda

- Introductions
- Meeting Format
- Non-Discrimination Policy
- Rules of Engagement
- Project Video Presentation
- Questions and Answers
- Slide Show

St. Lucie West Blvd. – Meet the Team



Marla Hewson

Construction Project Manager
FDOT District Four, Treasure Coast Operations



Jamie Polidora, P.E.

Engineer of Record & Design Project Engineer
FDOT District Four Design



Lee Watts, P.E.

Senior Project Engineer
JMT, Inc.



Omid Fallahinejad, P.E.

District Traffic Design Engineer
FDOT District Four Design



Patrick Hayes

Project Administrator
JMT, Inc.



Maria Missena, P.E.

Design Project Engineer
Scalar Consulting Group, Inc.



John Scherer

Contractor
Ranger Construction Industries, Inc.



Samantha Kayser

Community Outreach Specialist
The Corradino Group

Virtual Meeting Agenda

Meeting Format

- Presentation, Question & Answer
 - 4:30 p.m. to 5:00 p.m.
 - 5:00 p.m. to 5:30 p.m.
- Unguided PowerPoint Slide Show
 - If time allows after each Q&A



Existing bridge over I-95 looking west
(pre-construction)

Title VI of the Civil Rights Act of 1964

The Florida Department of Transportation is required to comply with various **non-discrimination laws and regulations**, including **Title VI of the Civil Rights Act of 1964**.

Public participation is solicited without regard to race, color, national origin, age, sex, religion, disability, or family status.

Persons wishing to express concerns about Title VI may do so by contacting either:

District Four Title VI Coordinator,
Florida Department of Transportation
Sharon Singh Hagyan, (954) 777-4190,
Sharon.SinghHagyan@dot.state.fl.us

Statewide Title VI Coordinator,
Florida Department of Transportation
Jacqueline Paramore, (850) 414-4753,
jacqueline.paramore@dot.state.fl.us
<https://www.fdot.gov/equalopportunity/titlevicontacts.shtm>

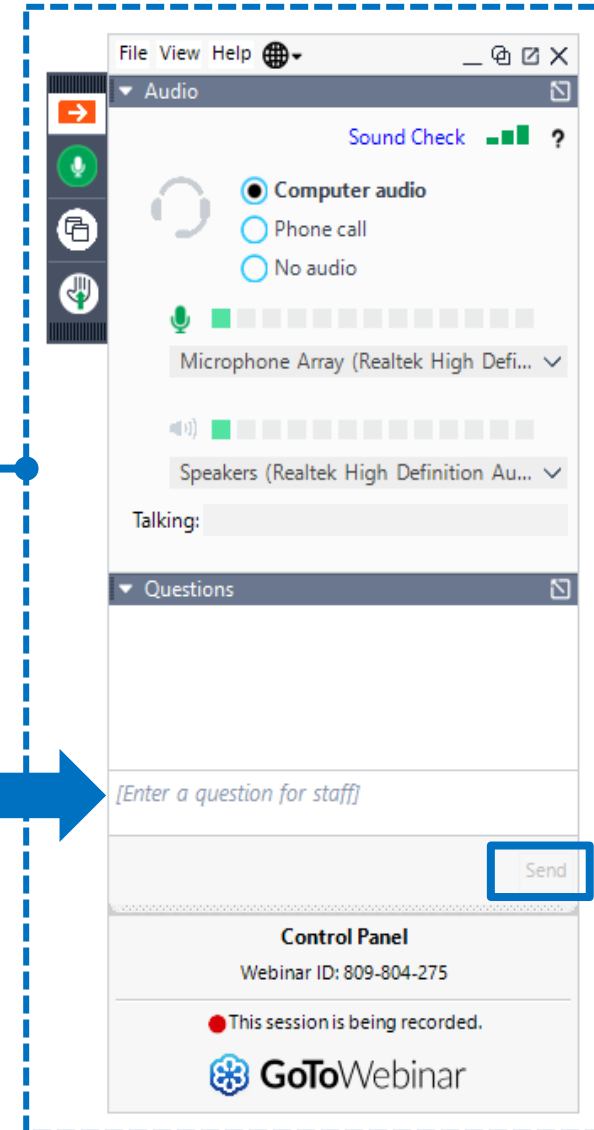
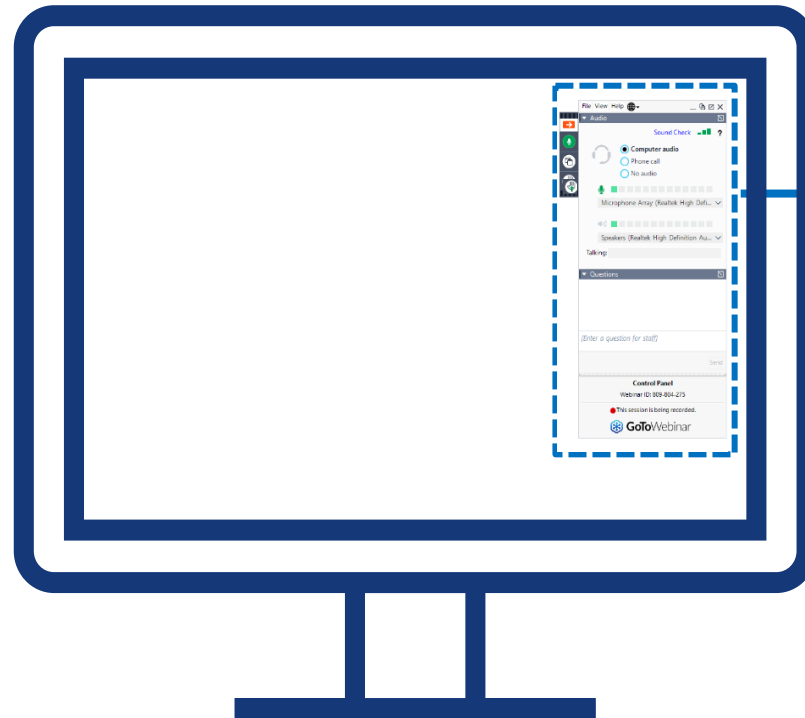
All inquiries or concerns will be handled according to FDOT procedure and in a prompt and courteous manner.

Online Attendee Control Panel

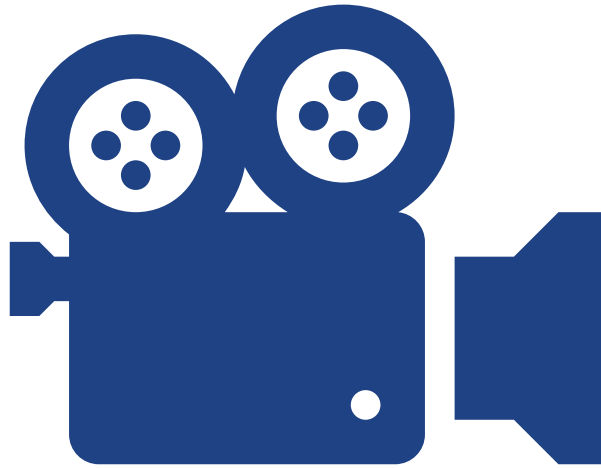
GoToWebinar Control Panel

Questions and comments can be entered into the question pane for the team to address directly after the presentation.

- ✓ Attendees are muted by default. Dial-in attendees are in listen only mode.
- ✓ To speak, please click the hand icon during the Question & Answer session.
- ✓ This meeting is being recorded. It will be posted to www.d4fdot.com.



Project Presentation



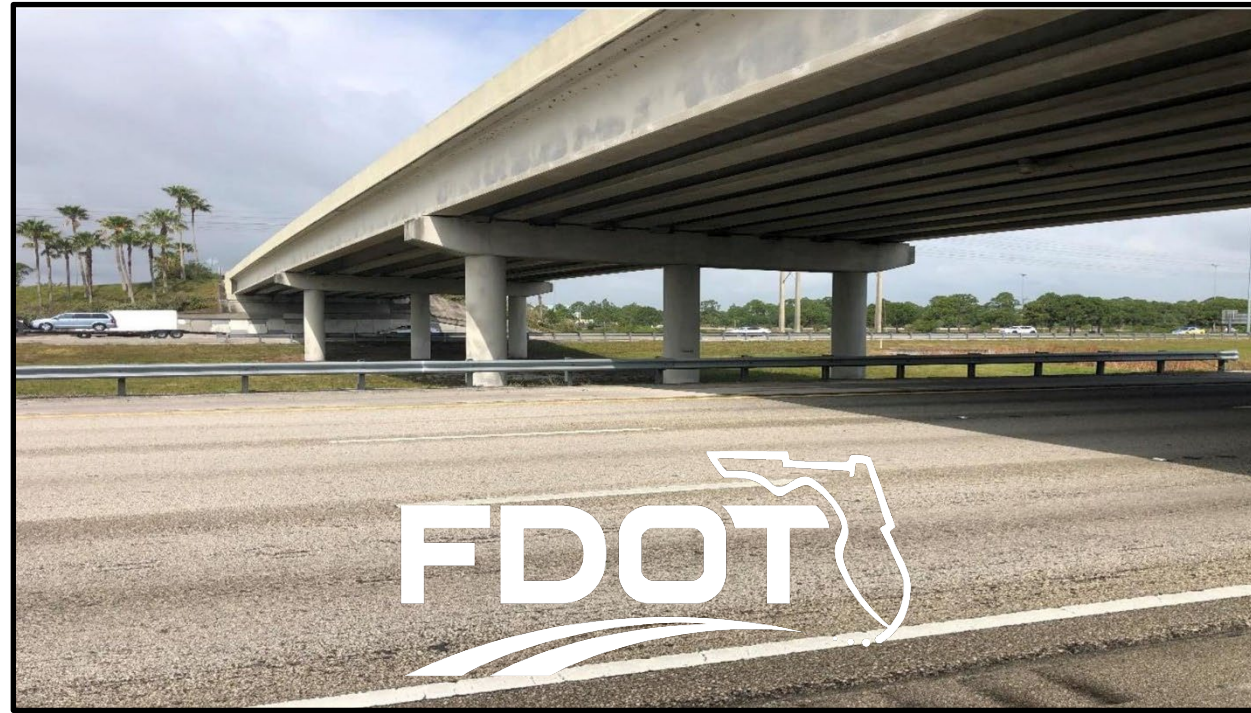
- Please enjoy the project video which includes information on the improvements to be completed, along with road and lane closure information.
- We will start the Question & Answer session after the video.



Florida Department of
TRANSPORTATION

St. Lucie West Boulevard Widening Project

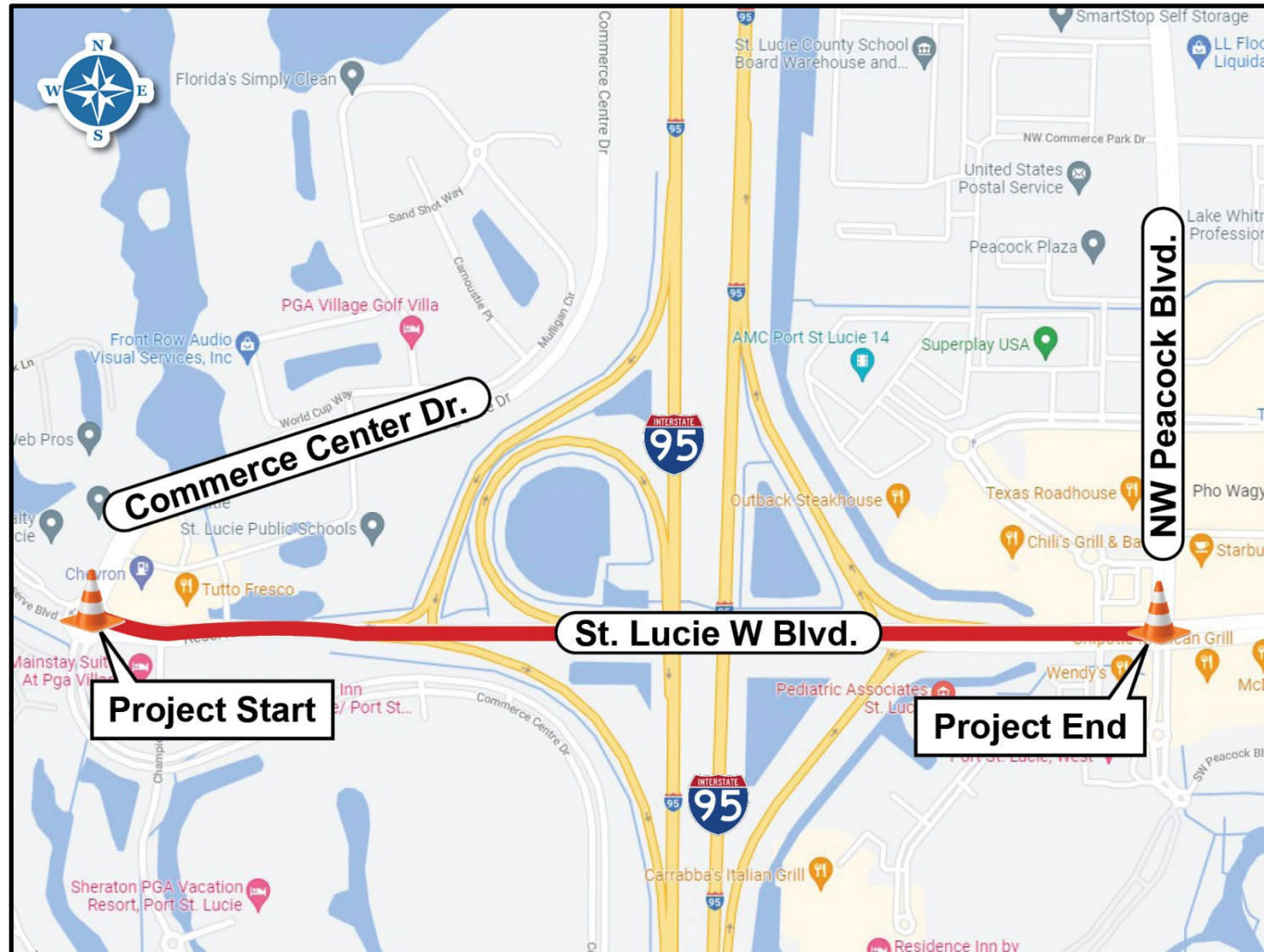
- The City of Port St. Lucie is the project sponsor
- FDOT District Four is assisting the city with the project design and construction (City of Port St. Lucie Resolution 20-R75)



St. Lucie Transportation
Planning
Organization



Project Limits



Project Overview

Purpose: Build a new bridge over I-95, separated from the existing bridge; widen St. Lucie West Blvd; rebuild/widen the I-95 ramps; install bicycle lanes, curbed median and gutter, fencing, railings, and new traffic signals with enhanced synchronization and timing at I-95 ramps.

Length: 1.814 miles

Contractor: Ranger Construction Industries, Inc.

Construction Start: January 24, 2022

Estimated Contract Cost: \$15.5 million

Contract Time: 576 calendar days
(not including weather and holidays)

Estimated Completion: Summer 2023



Eastbound St. Lucie West Blvd.
(pre-construction)

Scope of Work – Roadway Improvements

Roadway Improvements

- Build a new 3-lane eastbound bridge over I-95, separated 10-feet from the existing bridge
- Widen St. Lucie West Blvd. to accommodate:
 - Two (2) eastbound and westbound travel lanes, with a third eastbound lane between the I-95 southbound and northbound ramps
 - Two (2) eastbound left turn lanes at the I-95 northbound on ramp
 - Two (2) westbound right turn lanes at the I-95 northbound on ramp
- Rebuild/widen the I-95 ramps
- Connect the existing St. Lucie West Blvd. roadway to the new eastbound bridge from the east and west directions
- Build a 22-foot to 40-foot lane-line to lane-line median with curb and gutter



Existing bridge over I-95 (pre-construction)

Scope of Work – Pedestrian Features & Upgrades

Pedestrian & bicycle feature upgrades

- Installation of 7-foot buffered bicycle lanes/paved shoulder and 5-foot to 6-foot-wide sidewalks on both sides of the roadway
- Install pedestrian signalization to meet current safety standards
- Ensure all crosswalks and curb ramps within project limits meet Americans with Disabilities Act (ADA) standards

Upgrading features to current standards

- Signing and pavement markings
- Drainage improvements
- Installation of fencing retrofits on the north side of the existing bridge, and new railing on the eastbound bridge



Existing pedestrian pathway
(pre-construction)

Scope of Work – Roadway & Signalization Upgrades

Signalization & Lighting Improvements

- Installation of new traffic signals with enhanced synchronization and timing at I-95 ramps
- New lighting along I-95 ramps and St. Lucie West Blvd.
 - Nine (9) of the existing high-mast light poles will be removed and replaced with standard light poles



Existing lighting and signalization
(pre-construction)

Traffic Impacts & Construction Phasing

Maintenance of Traffic

- Work will be done in five (5) major phases to minimize impacts to the construction corridor
- Lane closures can be expected:
 - Nighttime, single lane closures along St. Lucie West Blvd., Sunday through Friday night from 10:00 p.m. to 6:00 a.m.
 - Nighttime, up to two lanes of I-95 may be closed in one direction at a time, Sunday through Thursday night, 11:00 p.m. to 5:00 a.m.
 - Nighttime, I-95 will be fully closed when work is occurring over I-95, Sunday through Thursday night from 11:00 p.m. to 5:00 a.m.
 - No lane closures are allowed during New York Mets spring training games from February 1st to March 31st

Traffic Impacts & Construction Phasing

Maintenance of Traffic

- When work is occurring over I-95, advance notice will be provided, and detour signage will be in place as needed
- Pedestrian access will be maintained; should sidewalk closures be required, detours will be clearly marked
- Access to businesses and residences will be maintained at all times; the project team will coordinate with businesses if temporary driveway closures are needed



Existing bridge over I-95 looking northeast
(pre-construction)

Traffic Impacts & Construction Phasing

Phase 1A

- **St. Lucie West Blvd. and Ramp F (eastbound St. Lucie West Blvd. to southbound I-95)**
 - Installation of temporary traffic control devices including temporary pavement markings as needed
 - Installation of temporary barrier wall on I-95 for bridge construction work
 - Build temporary Ramp F (eastbound St. Lucie West Blvd. to southbound I-95) pavement
 - Install erosion control devices

Construction Phasing

Phase 1B

- **St. Lucie West Blvd. / Ramp F, Ramp E, Ramp G and Ramp H**
 - Install temporary traffic control devices along St. Lucie West Blvd.
 - Build temporary signalization for use in Phase 1
 - Shift Ramp F (eastbound St. Lucie West Blvd. to southbound I-95) traffic onto newly constructed temporary Ramp F
 - Build roadway improvements, construct temporary signalization for use in Phase 2, install temporary pavement on ramps
- **I-95**
 - Install temporary traffic control devices along I-95
 - Install lighting along I-95

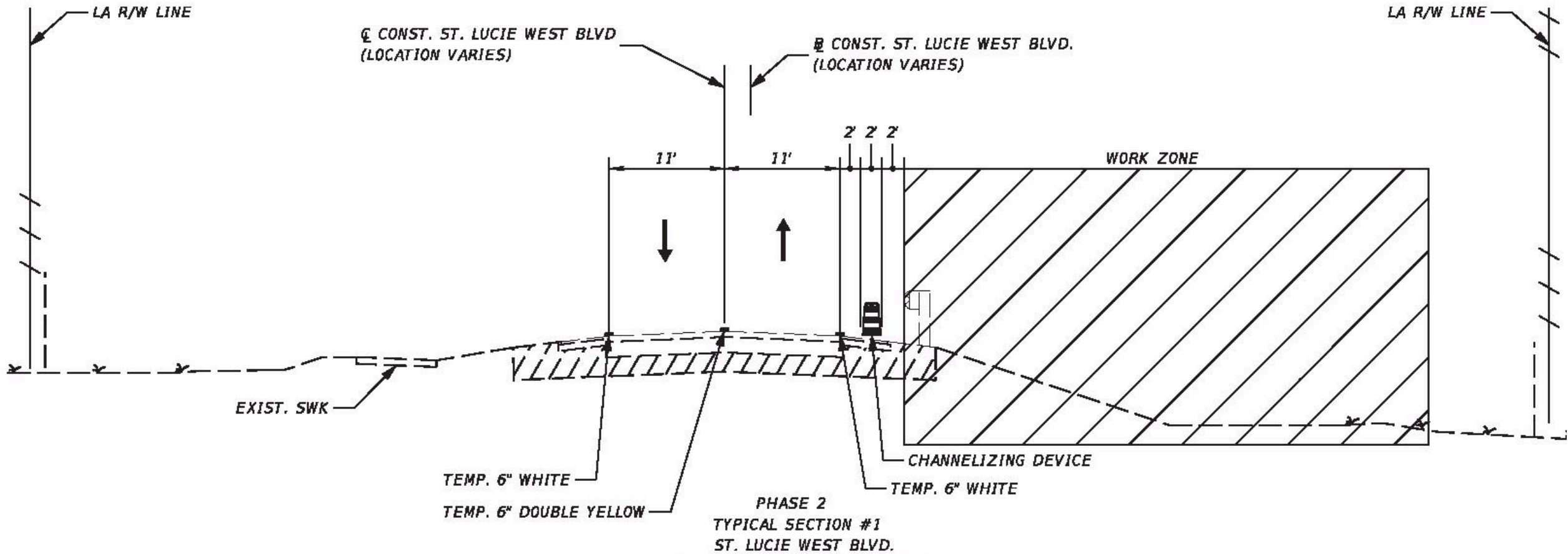
Construction Phasing

Phase 2

– St. Lucie West Blvd.

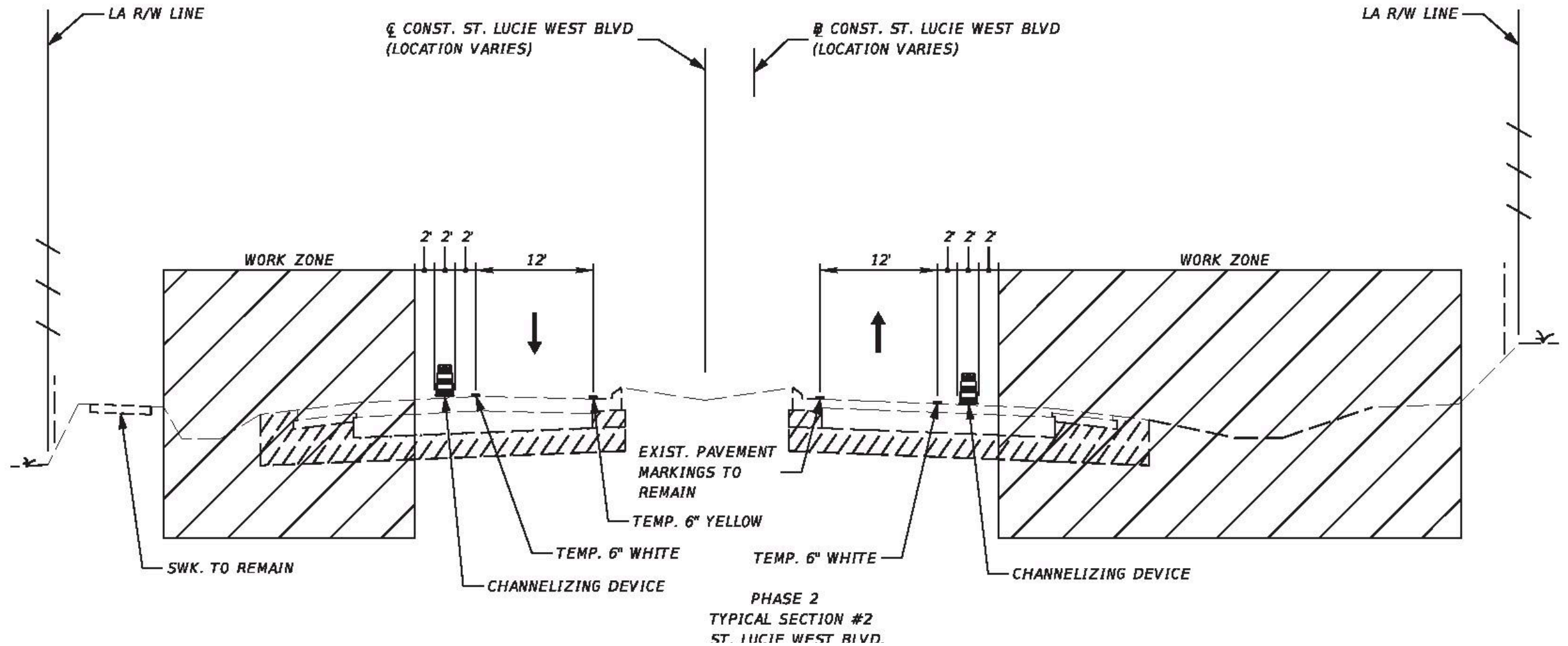
- Install temporary traffic control devices along St. Lucie West Blvd.
- Adjust signal heads as needed
- Build new eastbound roadway and bridge, median work, and drainage improvements
- Build temporary signalization on St. Lucie West Blvd. at Ramp F, Ramp H, Ramp E and Ramp G
- Maintain existing traffic alignments

Typical Section – Phase 2



West side of existing bridge

Typical Section – Phase 2



East side of existing bridge

Construction Phasing

Phase 2

- **Ramp H (southbound I-95 to St. Lucie West Blvd.)**
 - Shift traffic onto the east side of the ramp
 - Build the west side of the ramp including drainage swales
- **Ramp F (eastbound St. Lucie West Blvd. to southbound I-95)**
 - Shift traffic onto newly built Ramp F
 - Remove temporary pavement and detour from Phase 1 Ramp F
 - Build remaining roadway improvements (except friction course)
 - Build drainage swale and sidewalk

Construction Phasing

Phase 2

- **Ramp G (St. Lucie West Blvd. to northbound I-95)**
 - Shift traffic to the east onto temporary pavement
 - Build roadway improvements on the west side of the ramp
- **Ramp E (northbound I-95 to St. Lucie West Blvd.)**
 - Shift traffic to the west side onto existing and temporary pavement
 - Build roadway improvements on the east side of the ramp (except friction course)

Construction Phasing

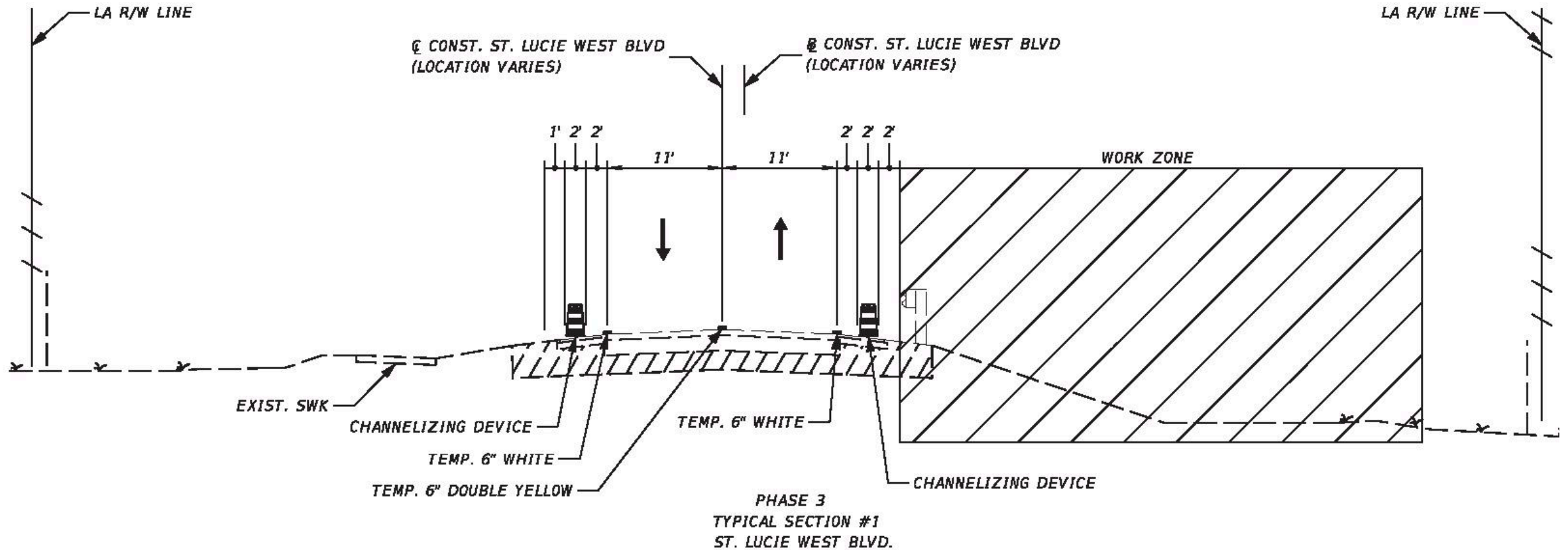
Phase 3

- **St. Lucie West Blvd.**
 - Adjust signal heads as needed
 - Continue roadway improvements and bridge construction
 - Build signalization mast arm B at the eastbound St. Lucie West Blvd. and Ramp E (northbound I-95 to St. Lucie West Blvd.)



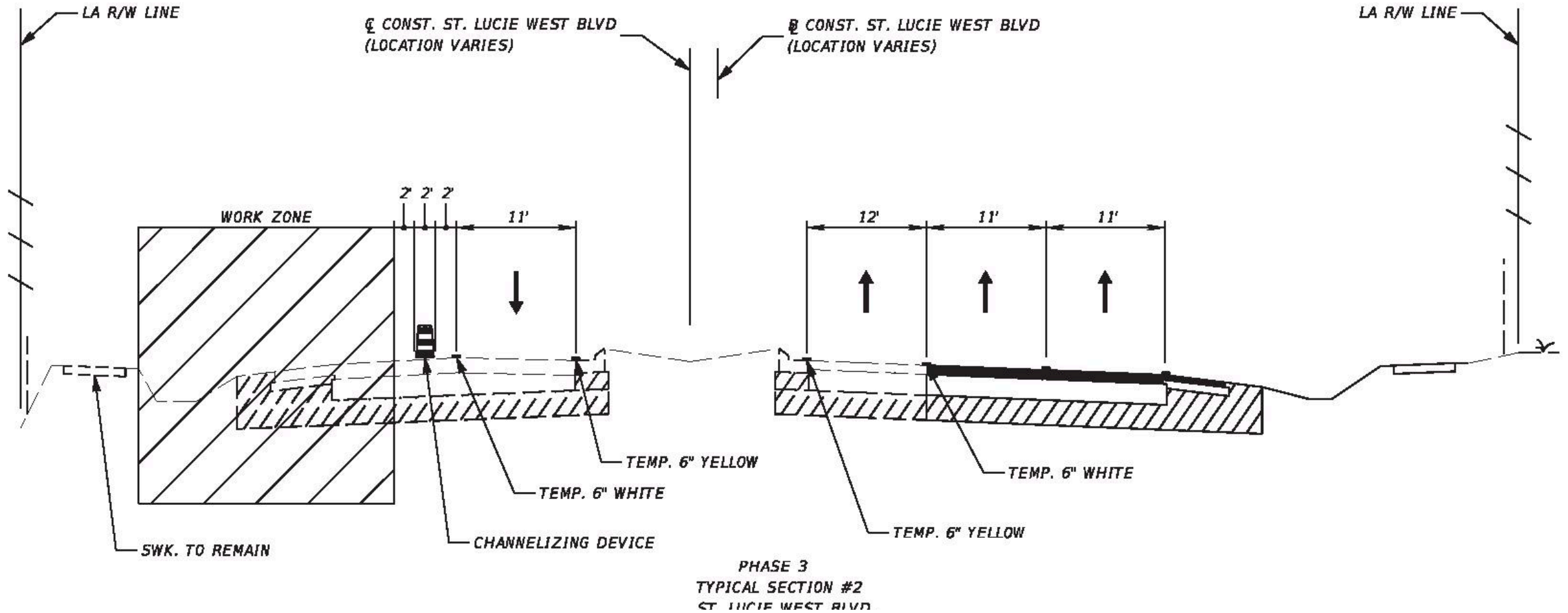
Looking northwest at the St. Lucie West Blvd. and I-95 northbound ramps intersection (pre-construction)

Typical Section – Phase 3



West side of existing bridge

Typical Section – Phase 3



East side of existing bridge

Construction Phasing

Phase 3

- **Ramp H (southbound I-95 to St. Lucie West Blvd.)**
 - Shift existing traffic onto the newly built western roadway and temporary pavement
 - Build roadway ramp improvements on the east side of the ramp
- **Ramp G (St. Lucie West Blvd. to northbound I-95)**
 - Shift existing traffic to the west on the newly constructed pavement
 - Build roadway ramp improvements on the east side of the ramp

Construction Phasing

Phase 3

- **Ramp E (northbound I-95 to St. Lucie West Blvd.)**
 - Shift traffic onto the newly built eastern ramp roadway
 - Build roadway improvements on the west side of the ramp including completing the drainage and new pavement
- **Ramp D (westbound St. Lucie West Blvd. to southbound I-95)**
 - Resurface the ramp

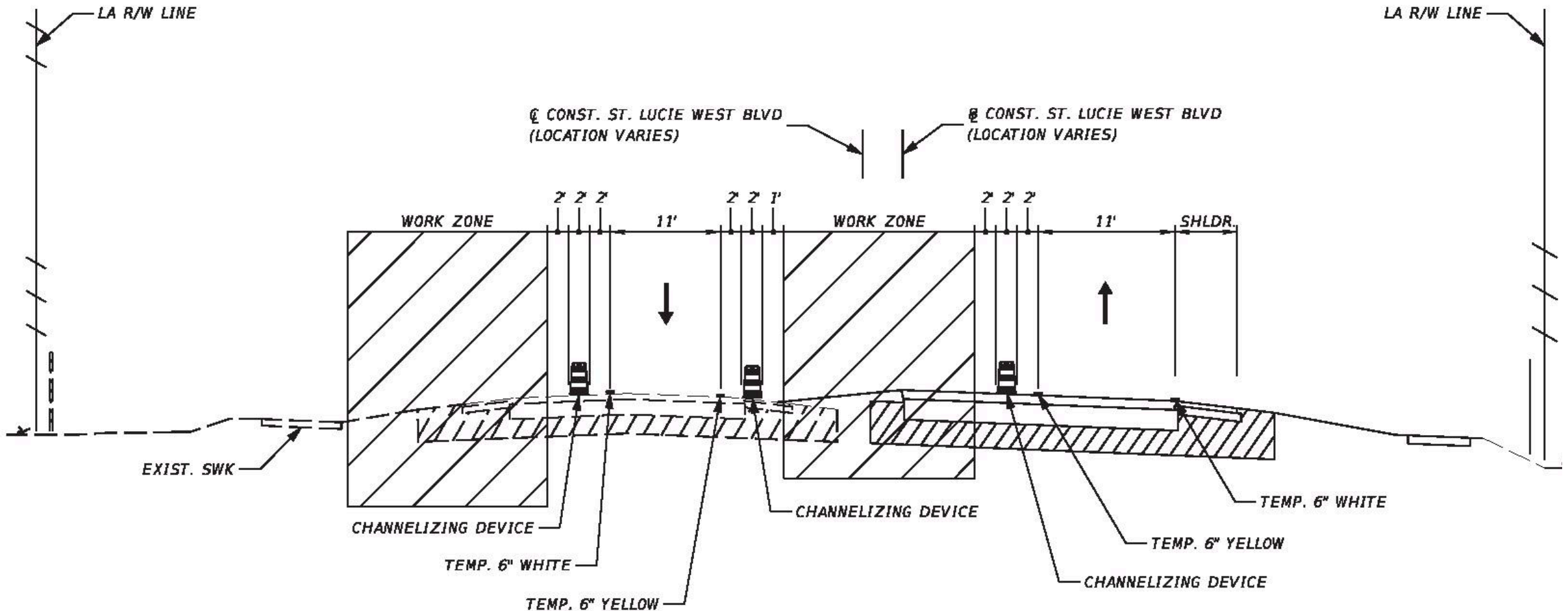
Construction Phasing

Phase 4

- **St. Lucie West Blvd.**

- Shift eastbound travel lane onto the newly built roadway and bridge
 - Westbound traffic will be on the old bridge
 - Eastbound traffic will be on the newly constructed bridge
- Build medians, traffic separators, curb, and gutter, and overbuild on St. Lucie West Blvd.
- Build curb and gutter at median islands along Ramp H and Ramp E
- Complete building of ramps
- Complete signalization and lighting work

Typical Section – Phase 4



PHASE 4
TYPICAL SECTION #1
ST. LUCIE WEST BLVD.

East side of existing bridge

Construction Phasing

Phase 5

- **St. Lucie West Blvd. and all Ramps**
 - Mill and resurface roadways
 - Install friction course
 - Place final pavement markings, signage, and raised pavement markers



Existing I-95 southbound off ramp to St. Lucie West Blvd.
(pre-construction)

St. Lucie West Blvd. Typical Section

St. Lucie West Blvd



Between NB I-95 and Peacock Boulevard
(looking east)

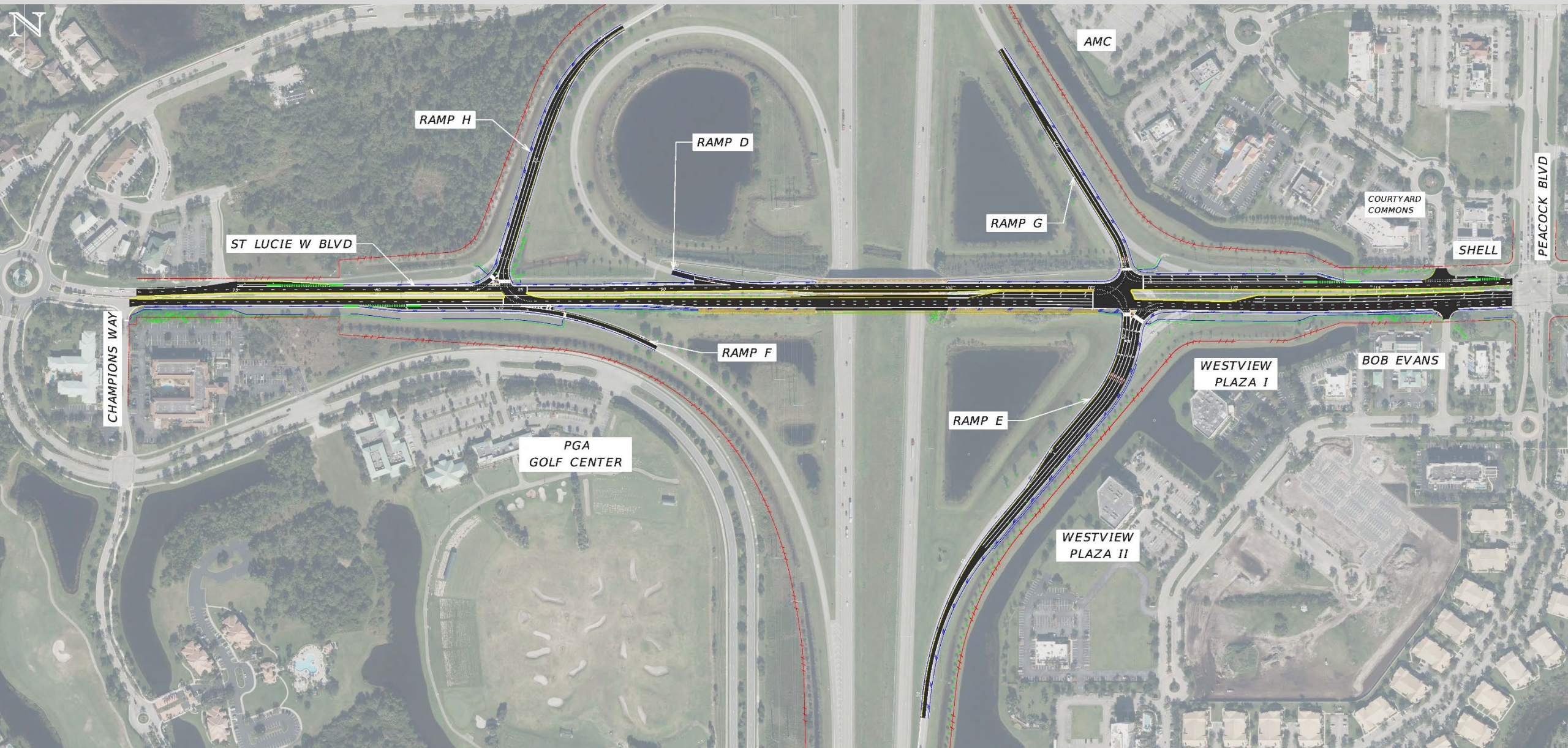
St. Lucie West Blvd. Typical Section

St. Lucie West Blvd



Between SB I-95 and Commerce Center Drive
(looking east)

St. Lucie West Blvd. Project Rendering



Safety & Local Coordination

- **Public Safety is our Top Priority!**

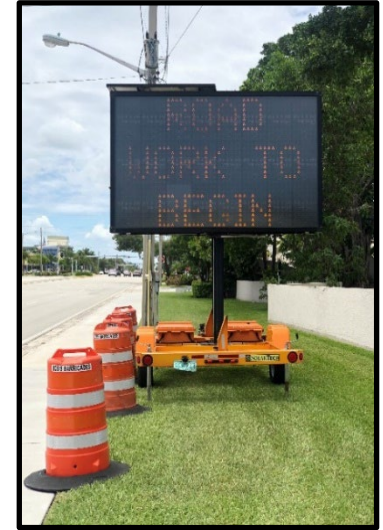
- **Work Zone Signage & Maintenance of Traffic**

- Advanced warning and project signage will be placed throughout the construction corridor to alert the traveling public

- **Local Agency & Stakeholder Coordination**

- The project team will continue working closely with local stakeholders including the City of Port St. Lucie, schools, neighborhoods and other local agencies to ensure safety standards are met and impacts to the public are minimized in any way possible

- **Emergency vehicles will be provided access at all times**

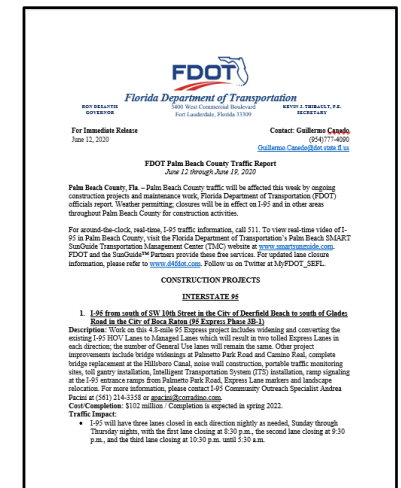


Lighted Message Board

Community Outreach

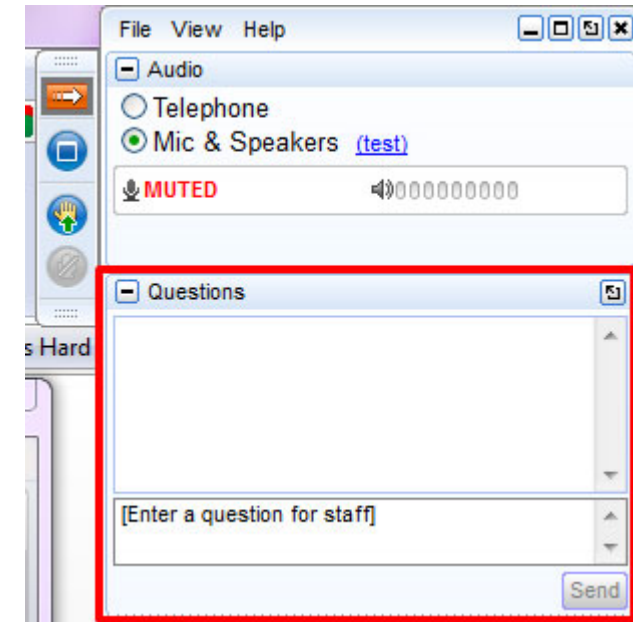
For more information on the project...

- Project Website: www.d4fdot.com
- Weekly Lane Closure Press Release
- Please contact Samantha Kayser, Community Outreach Specialist, to be added to the lane closure email notification blast list
 - (772) 579-5479
 - skayser@corradino.com



Questions and Comments

Questions and comments can be entered into the question pane for the team to address directly.



Throughout the project, questions or comments can be submitted via email or phone to Samantha Kayser.



skayser@corradino.com



(772) 579-5479

St. Lucie West Blvd. – Live Q&A



Marla Hewson

Construction Project Manager
FDOT District Four, Treasure Coast Operations



Jamie Polidora, P.E.

Engineer of Record & Design Project Engineer
FDOT District Four Design



Lee Watts, P.E.

Senior Project Engineer
JMT, Inc.



Omid Fallahinejad, P.E.

District Traffic Design Engineer
FDOT District Four Design



Patrick Hayes

Project Administrator
JMT, Inc.



Maria Missena, P.E.

Design Project Engineer
Scalar Consulting Group, Inc.



John Scherer

Contractor
Ranger Construction Industries, Inc.



Samantha Kayser

Community Outreach Specialist
The Corradino Group

Thank you for attending!

**This concludes the
Virtual Public Meeting for the
St. Lucie West Blvd. Widening Project
in the City of Port St. Lucie,
St. Lucie County**



MOVE OVER

or slow down for emergency lights.

#MoveOverFL

FLHSMV



Florida Department of Transportation